



# UTATIP METERTEK DUAS

## SOLUSI METER & FLOWMETER



Wide Measuring Range  
Communication  
Easy Reading

## TD8

### Rotary piston volumetric type water meter

- ▶ Very large measuring range
- ▶ Pre-equipped for communication
- ▶ Very low starting flow



TD8 is a piston type meter with extra dry register for residential and commercial & industrial applications.

#### The Technology

TD8 combines the advantages of piston type technology together with proven reliability of the extra dry register. No gears in contact with water.

The smooth piston chamber ensures long term accuracy. The irreversible meter cap mounting makes it totally tamperproof without the use of lead seals.

#### Standard Compliance

- OIML/NSC R49-1 class 2 in all positions
- EEC/ISO 4064 class C in all positions
- AS 3565.1
- AS 3565.3 (dual check valve versions)
- AS 2845.1 (dual check valve versions)

#### Measuring Range

- Very low starting flow allows leakage detection
- Very large measuring range with Q3/Q1 Ratio = 630 (DN15) or 250 (DN20 to DN32)

#### Easy Reading

TD8 extra dry register offers the following benefits:

- Rotation close to 360° on site
- Large numbered rollers with good contrast for excellent reading capability
- Wiper ensures readability of the extra-dry register in tough humid conditions
- Leakage detector dial on meter can be used to easily identify leaks at a glance
- Case protection: IP 68

#### Communication Device

Pre-equipped for future communication through patented Cyble technology.

# UTATIP METERTEK DUAS

## SOLUSI METER & FLOWMETER



► Cyble RF fitted on TD8 DN20 with specific lid

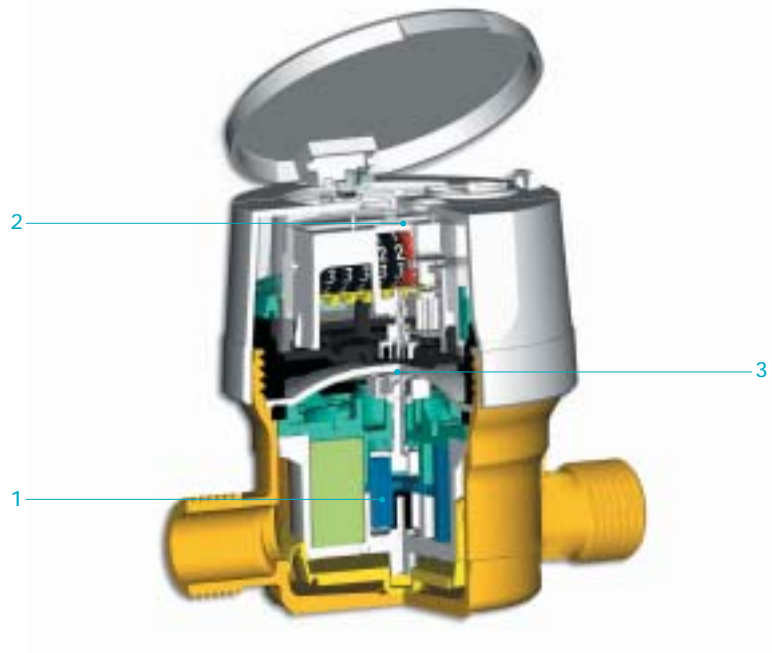
## Working Principle

The TD8 has two main components; the hydraulics that allows measurement of the water flow and the register that displays the measured water volume.

TD8 is a piston type volumetric meter **1**. Each rotation of the piston in the measuring chamber represents a given volume of water passing through.

The magnetic coupling transmission, standard on the TD8 line, is accompanied by an extra-dry register **2**. Both gears and the register are in a waterproof and air tight enclosure.

Transmission interface between those components is achieved by a magnetic coupling **3**.



## Communication

The TD8 is supplied pre-equipped with Cyble Target. Allows communication and remote reading through:

- Radio frequency wireless link (Cyble RF)
- Pulse output (Cyble Sensor)
- M-Bus protocol (Cyble M-Bus)

- Actaris standardized meter interface, irrespective of meter technology and widely spread on Actaris water meters range
- Reliability brought by electronic switch (no wear or bouncing)
- Reverse flow management
- Principle proven in the field for many years
- Cyble technology being immune to magnetic tampering

### Key Advantages of Cyble Technology

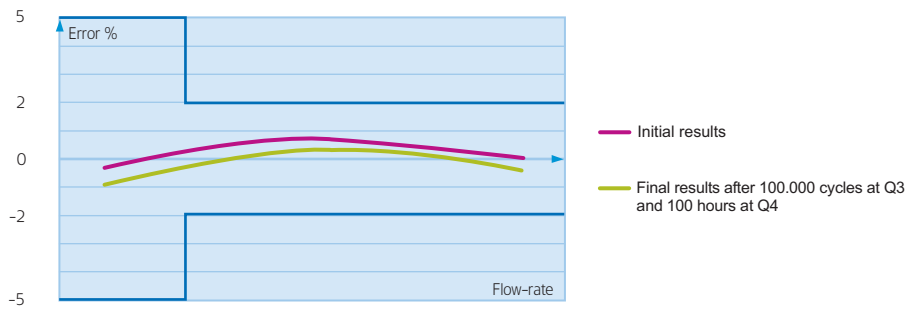
- No need for additional investment on the meter to implement remote reading

## Metrological Characteristics

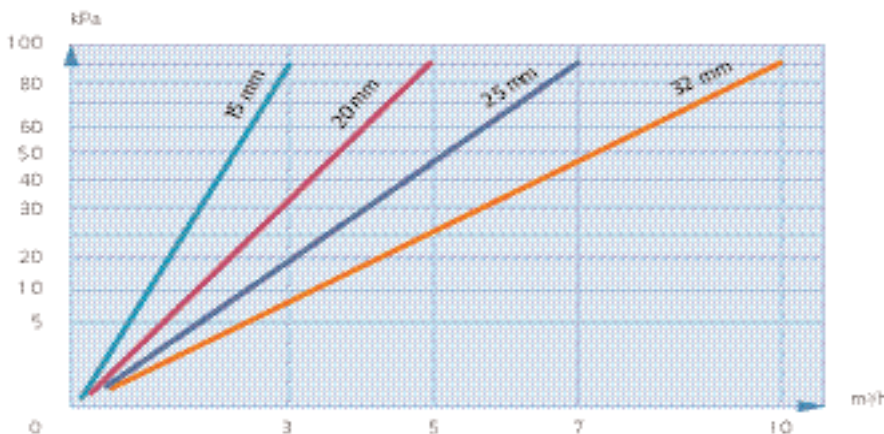
Nominal diameter (DN)	mm	15	20	25	32	
ISO 4064 metrology class			Class C all positions			
NSC R49-1 approval			14/3/3			
E.E.C. approval			F-02-G-070			
Maximum admissible temperature	°C		30*			
Maximum temperature for short period	°C		50			
Maximum admissible pressure	kPa	1600		1200		
Testing pressure	kPa		2500			
Pressure loss P (Q4)	kPa		<100			
Flow rate ratio	Q3/Q1	630	250	250	250	
Overload flow rate	Q4	m <sup>3</sup> /h	3.125	5	7.875	12.5
Permanent flow rate	Q3	m <sup>3</sup> /h	2.5	4	6.3	10
Transitional flow rate	Q2	l/h	16	26	40	64
Minimum flow rate	Q1	l/h	4	16	25	40
Starting flow rate		l/h	1	2	6	11
Indication range	m <sup>3</sup>	10 <sup>4**</sup>		10 <sup>5</sup>		
Minimum scale interval	l	0.05		0.5		
Communication pre-equipment			Cyble Technology			

\* Also available with maximum admissible temperature of 90°C - \*\* Exists also with 10<sup>5</sup> indicator range

## Endurance Curve



## Head Loss

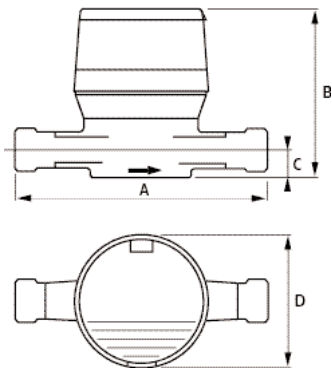


**UTATIP METERTEK DUAS**  
SOLUSI METER & FLOWMETER

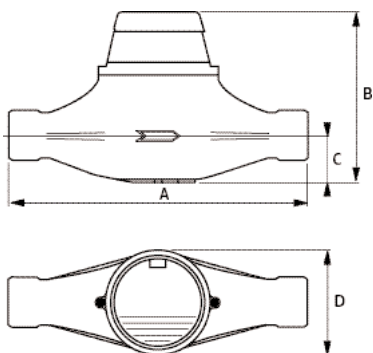


► TD8 indicator

▶ DN 15-20



▶ DN 25-32



## Dimensions

Nominal diameter (DN)	m m	15	20	25	32
Meter thread	inches	G 3/4"	G 1"	G 1" 1/4	G 1" 1/2
	mm	20x27	26x34	33x42	40x49
A	mm	105	190*	175x178	200
B	mm	116	143	156	156
C	mm	18	20	44	44
D	mm	88	88	10	110
Weight	kg	1.2	1.54	3.1	3.8

\* Other available lengths 105, 140, 152, 154, 165 mm

## Options (none exhaustive list)

TD8 meters may be fitted with:

- Very low head loss version of dual check valve compliant with Australian standards
- Color coded body for waste water application
- Removable 316 stainless steel filter inserted in the inlet
- Anti-frost device
- Hot water version



**UTATIP METERTEK DUAS**  
**SOLUSI METER & FLOWMETER**